

**AUTOMATIC CHANGEOVER PANEL – TRANSFER SWITCH TYPE**

**Specific Detail:**

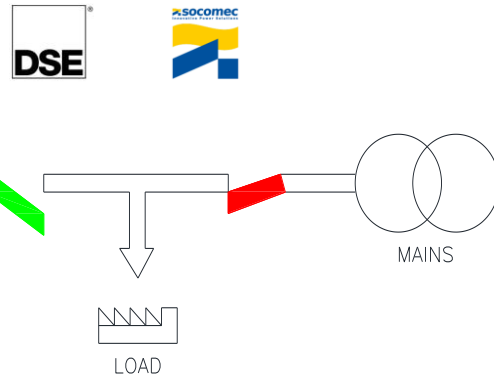
External protection: IP42  
 Internal protection: IP2X  
 Switching device: 4 pole load break switch AC 23A/23B  
 Operating voltage / Hz: 380-440 / 220-254v 50/60 Hz nominal  
 Operating temperature range: - 10° to + 35°C

**Equipment:**

Electronic ATS control module DSE331

- Configurable inputs (4)
- Configurable volt-free outputs (4)
- Configurable DC outputs (4)
- LED indicator
- Front panel/PC configuration
- Remote monitoring
- Source 1/Source 2 control
- Configurable timers
- Start inhibit
- Load inhibit
- Automatic switch-over between supplies
- Single event scheduler
- 3-phase display

4pole changeover transfer switch  
 12/24v DC self seeking power supply unit  
 Set of control circuit protection miniature circuit breakers  
 Set of power terminals for utility / generator & load cable connections  
 Earth bolt / bar





**Optional extras:**

Cable extension bars  
 Floor standing feet (wall mounting sizes only)

**All panels supplied with full general arrangement & electrical CAD drawing package and factory test certificate.**

**Standard CPS Price List**

	Rating	Switching Device	Controller	Panel Size (H x W x D)	Cost (Ex VAT)
	63A	Socomec ATyS d M	DSE331	600 x 400 x 210	£929.00
	80A	Socomec ATyS d M	DSE331	600 x 400 x 210	£954.00
	100A	Socomec ATyS d M	DSE331	600 x 400 x 210	£978.00
	125A	Socomec ATyS d M	DSE331	600 x 400 x 210	£993.00
	160A	Socomec ATyS d M	DSE331	600 x 400 x 210	£1,058.00
	125A	Socomec ATyS r	DSE331	600 x 400 x 300	£1,466.00
	160A	Socomec ATyS r	DSE331	600 x 400 x 300	£1,478.00
	250A	Socomec ATyS r	DSE331	1200 x 600 x 600	£1,753.00
	400A	Socomec ATyS r	DSE331	1200 x 600 x 600	£2,091.00
	630A	Socomec ATyS r	DSE331	1200 x 600 x 600	£2,506.00
	800A	Socomec ATyS r	DSE331	1200 x 800 x 600	£2,888.00
	1000A	Socomec ATyS r	DSE331	1200 x 800 x 600	£3,217.00
	1250A	Socomec ATyS r	DSE331	2000 x 800 x 800	£4,056.00
	1600A	Socomec ATyS r	DSE331	2000 x 800 x 600	£4,478.00

All prices are ex works. Delivery is £50 per pallet (Up to 800Amp) & £100 per pallet (1000Amp & over).

